

## SCHEME OF EVALUATION

(Scoring Indicators)

Revision : 2010

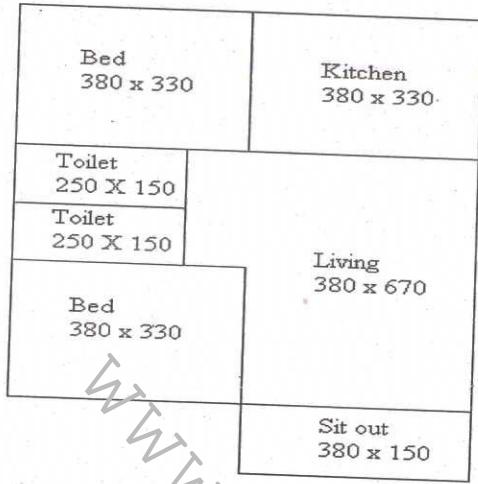
Course Code : 4001

Course Title : BUILDING PLANNING & DRAWING

Qn. No.	Scoring Indicator	Split up Score	Sub Total	Total			
I	1						
	<b>PART - A</b>						
	1				It has sloping rafters supported on wall plate at one end and ridge piece at the other end. It is used when the span is less than 3 m.		
	2				Style is the external vertical member of the shutter and rail is the horizontal member of shutter and may be top, lock and bottom rail.		1 1/2
	3				Gable roof is sloping in two directions only and wall plates are provided on two walls only. Hip roof is sloping in all four directions and wall plates are provided on all walls.		1 1/2
	4				It is the bottom surface of an opening.		1 1/2
	5				It is an intermediate floor in any storey over-hanging and over-looking a floor beneath.		1 1/2
	6				car- not less than 15 m <sup>2</sup> , scooter- 3 m <sup>2</sup> , cycle- 1.5 m <sup>2</sup>		1 1/2
	7				Plinth area is the built up covered area measured at floor level excluding plinth offsets. Carpet area is the usable floor area excluding area of kitchen, store, verandah, stair case, toilets etc.		1 1/2
	8				WC- 1.1 m <sup>2</sup> , WC cum bath- 2.2 m <sup>2</sup>		1 1/2
9	Pipe culvert, box culvert, arch culvert, RCC slab culvert, T-beam and slab culvert.		1 1/2				
10	It is drawn in 1:400 scale and shows the details regarding water supply, sewage disposal system, plumbing details, electrical connections and other building services.		1 1/2				

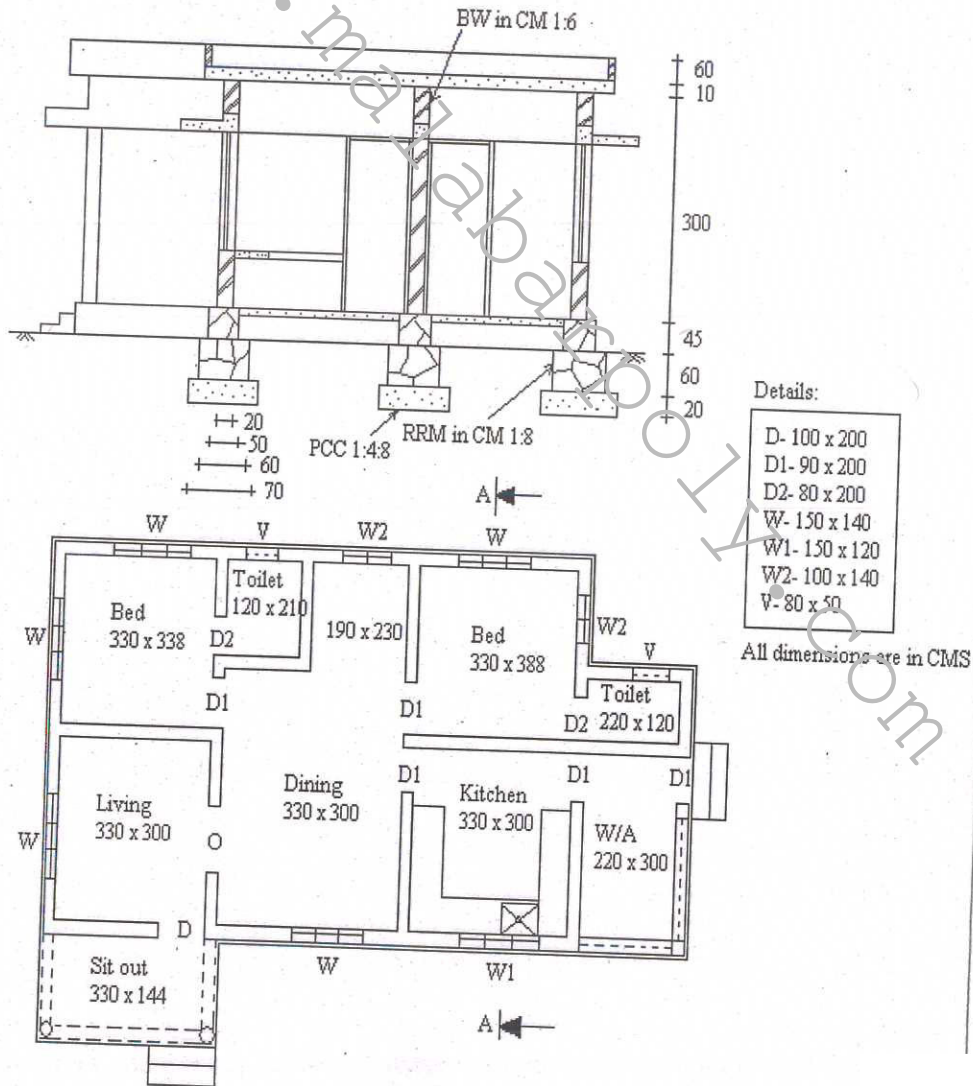
**PART-B**

II(a)

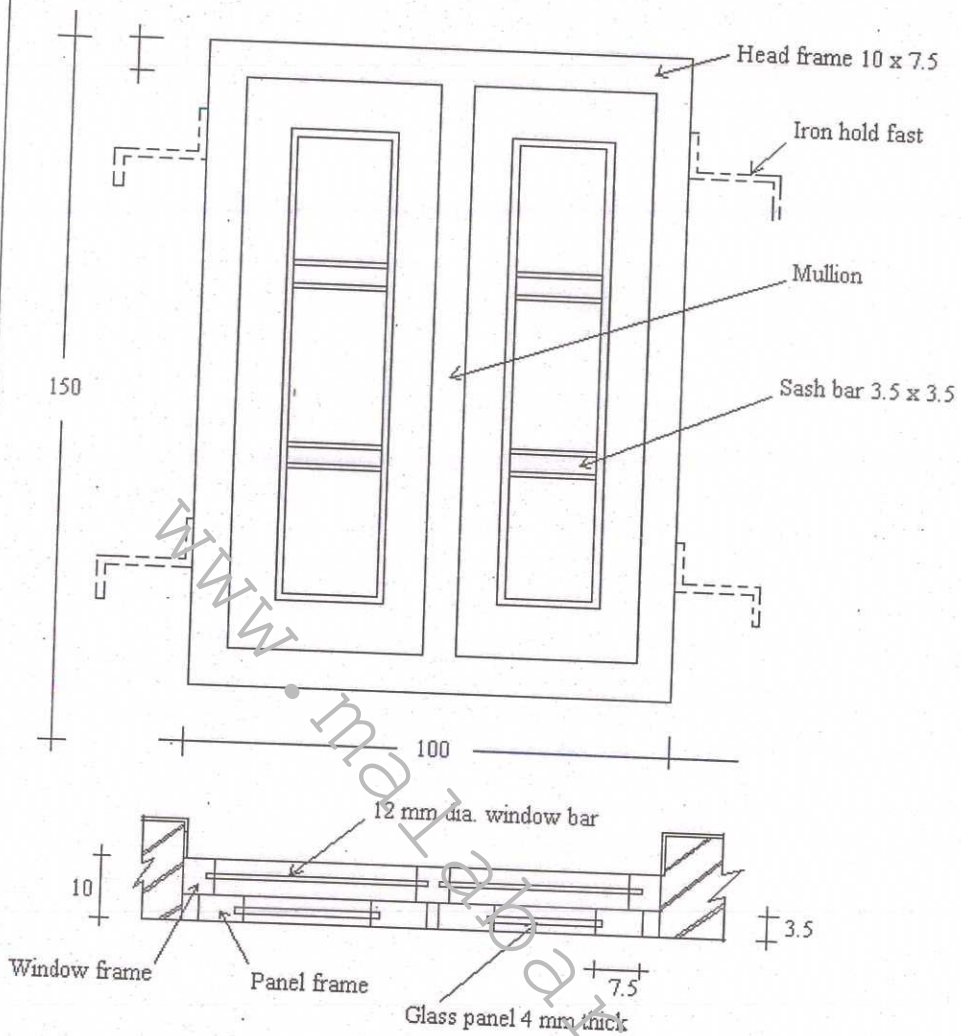


25

II(b)



III



OR

IV

