

②
7/11/23

D-5
NOV-23

SCHEME OF VALUATION

STRUCTURAL & IRRIGATION ENGINEERING DRAWING

UNIT - I

I. a.

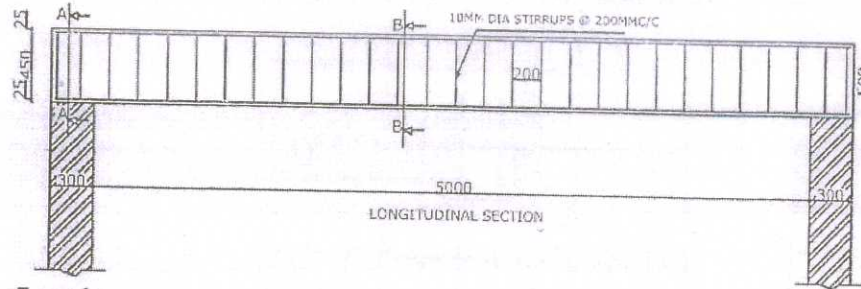


Figure - 7 marks
 Reinforcement – 5 marks
 Dimensioning – 2 marks
 Neatness – 1 mark

I. b.

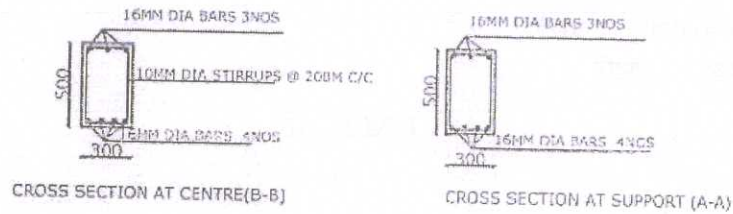


Figure - 5 marks
 Reinforcement – 3 marks
 Dimensioning – 1 mark
 Neatness – 1 mark

II. a.

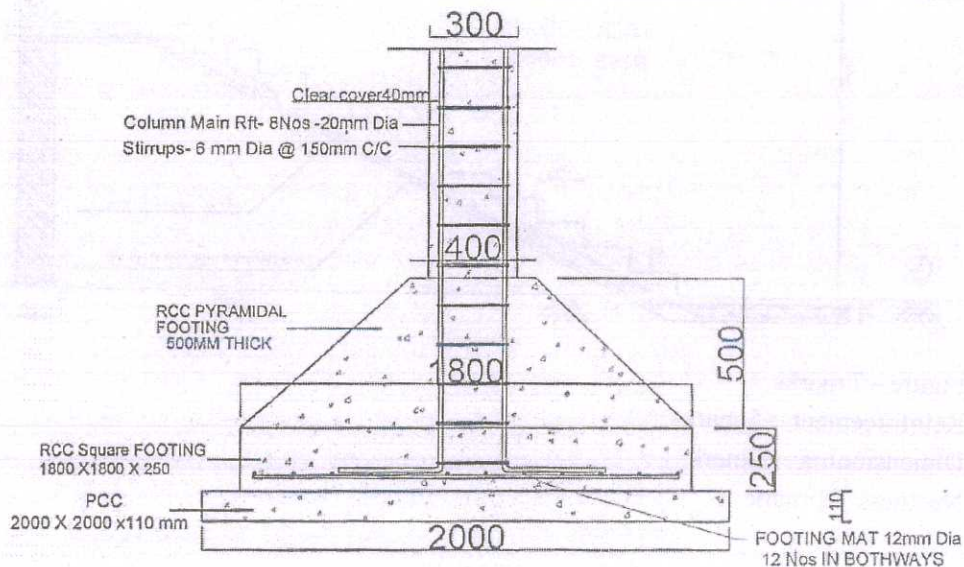


Figure - 7 marks
 Reinforcement – 5 marks
 Dimensioning – 2 marks
 Neatness – 1 mark

II. b.

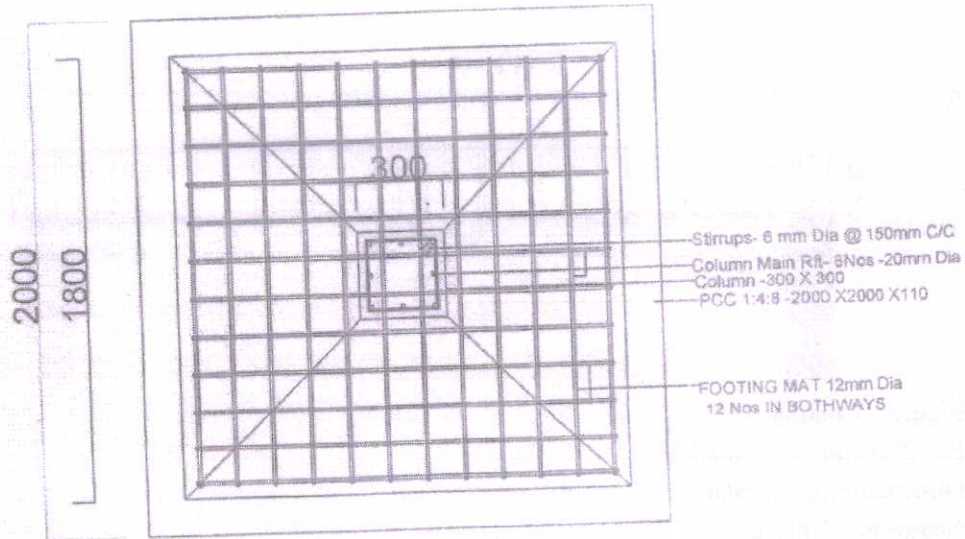


Figure - 5 marks
 Reinforcement – 3 marks
 Dimensioning – 1 mark
 Neatness – 1 mark

UNIT - II

III. a.

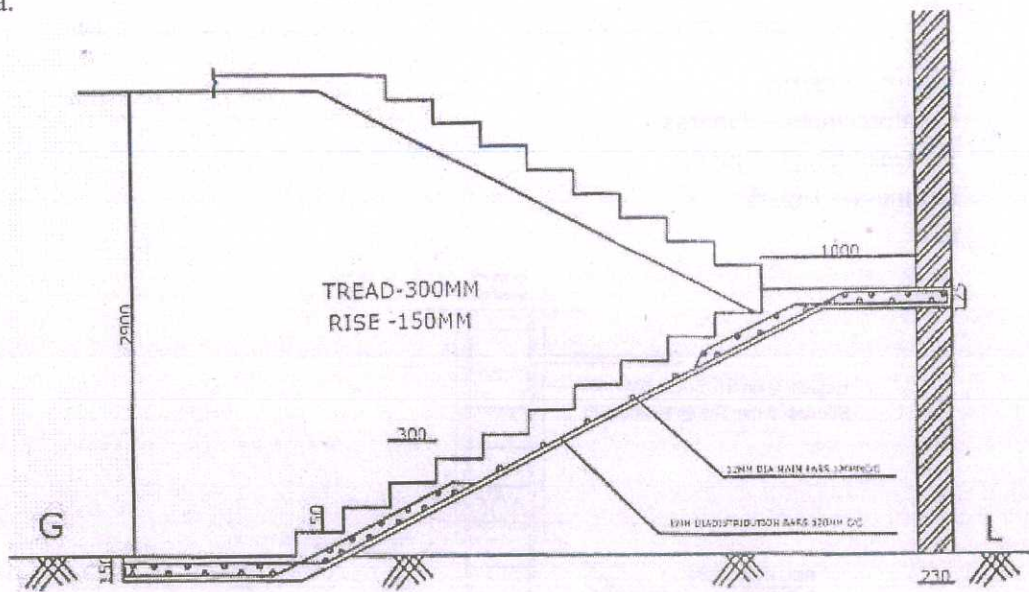


Figure - 7 marks
 Reinforcement – 5 marks
 Dimensioning – 2 mark
 Neatness – 1 mark

III. b.

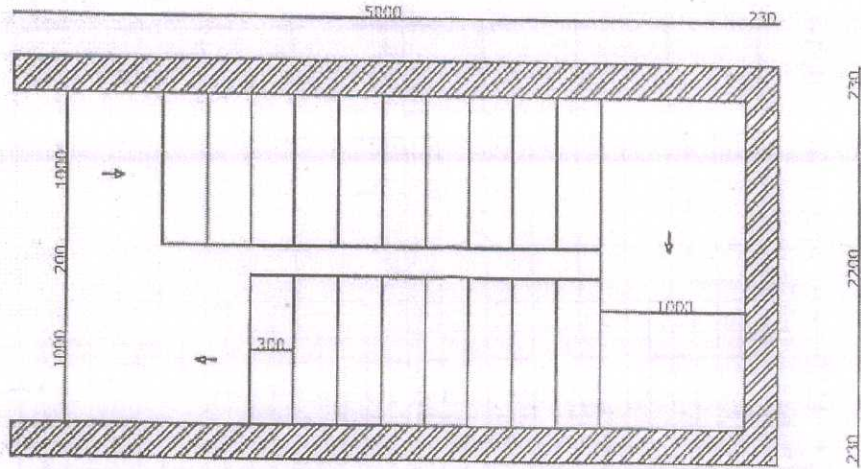


Figure - 7 marks
 Dimensioning – 2 marks
 Neatness – 1 mark

IV. a.

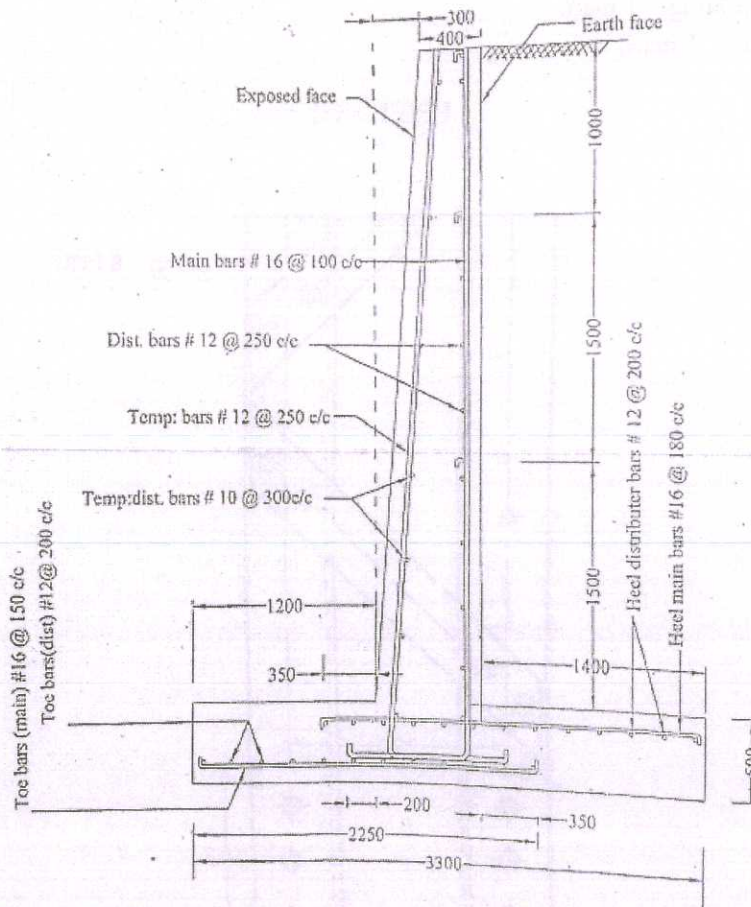


Figure - 7 marks
 Reinforcement – 5 marks
 Dimensioning – 2 marks
 Neatness – 1 mark

IV. b.

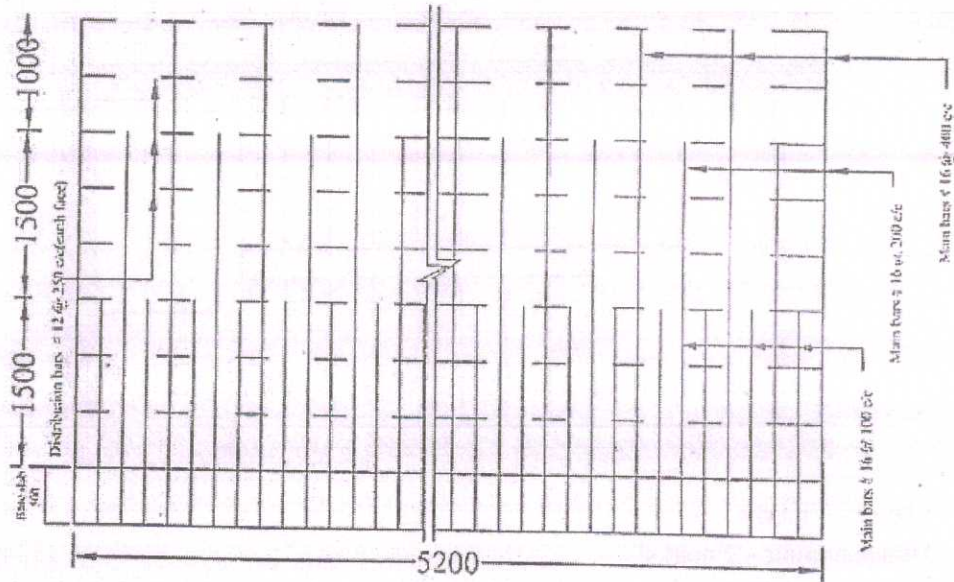


Figure - 5 marks
Reinforcement - 3 marks
Dimensioning - 1 mark
Neatness - 1 mark

UNIT - III

V. a.

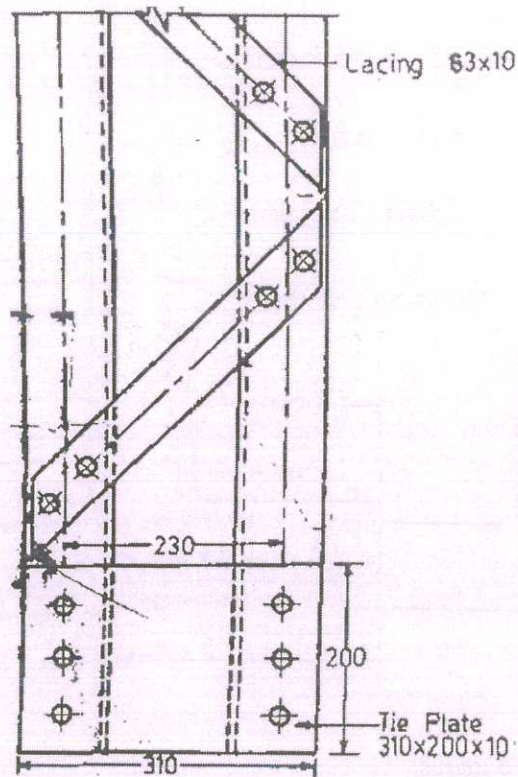


Figure - 10 marks
Labelling & Dimensioning - 4 marks
Neatness - 1 mark

V. b.

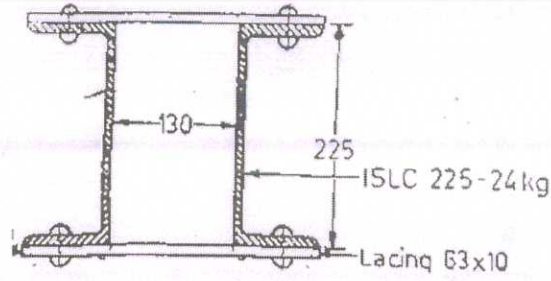


Figure - 7 marks
 Labelling & Dimensioning - 2 marks
 Neatness - 1 mark

VI. a.

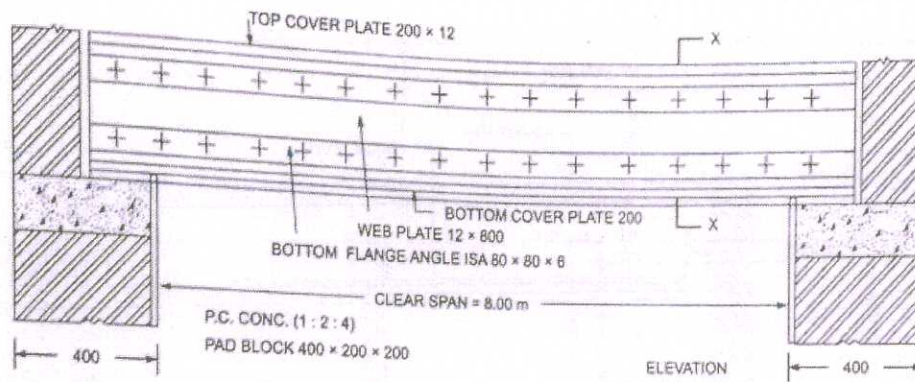


Figure - 10 marks
 Labelling & Dimensioning - 4 marks
 Neatness - 1 mark

VI. b.

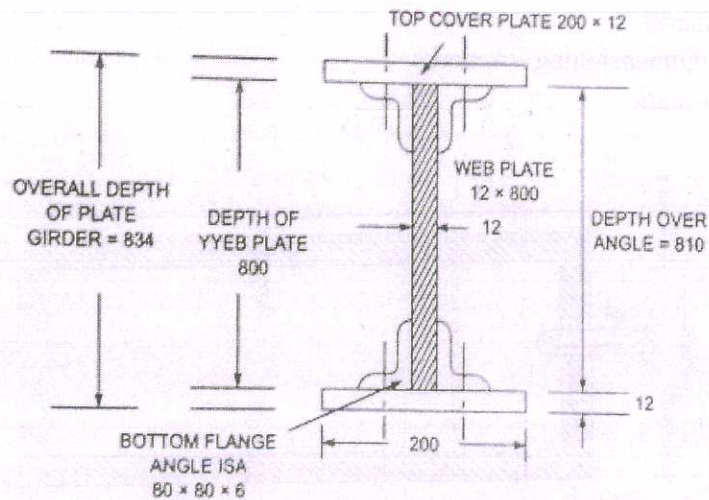


Figure - 7 marks
 Labelling & Dimensioning - 2 marks
 Neatness - 1 mark

UNIT - IV

VII.

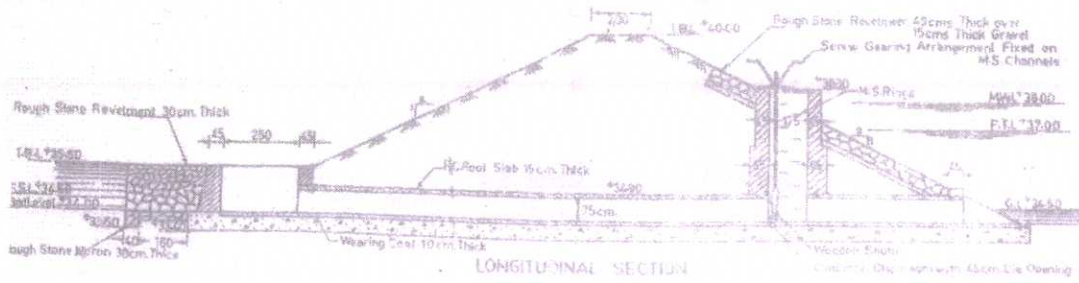


Figure - 15 marks
 Labelling & Dimensioning – 5 marks
 Neatness – 3 marks
 Scale – 2 marks

VIII. a.

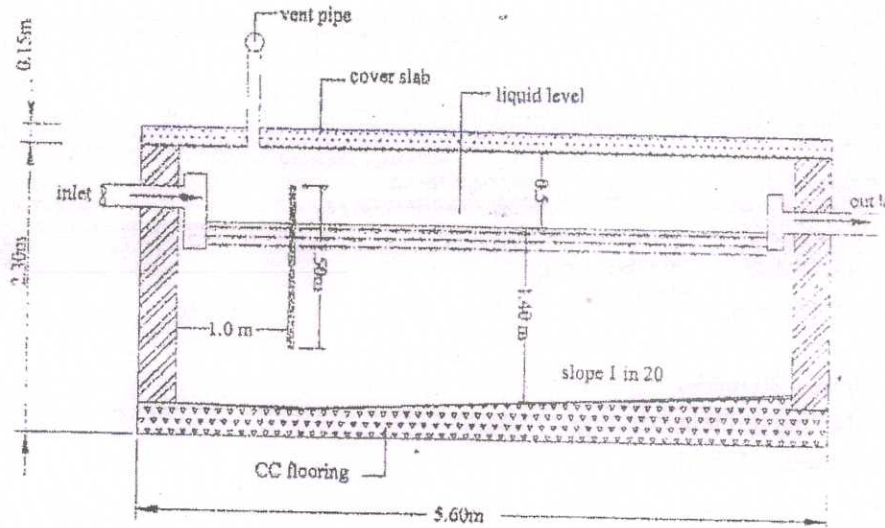


Figure - 10 marks
 Labelling & Dimensioning – 4 marks
 Neatness – 1 mark

VIII. b.

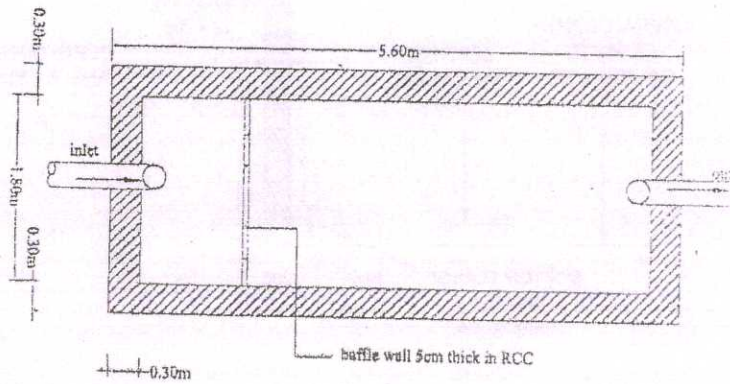


Figure - 7 marks
 Labelling & Dimensioning – 2 marks
 Neatness – 1 mark

BLUE PRINT

COURSE: STRUCTURAL & IRRIGATION
ENGINEERING DRAWING

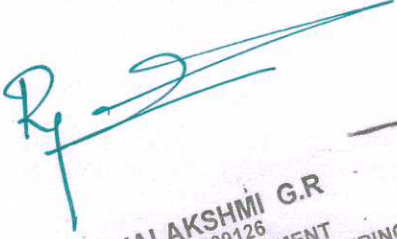
VERSION: Revision(15) 6011

SI No	Module	No of Questions	Score
1	Module 1	2	50
2	Module 2	2	50
3	Module 3	2	50
4	Module 4	2	50
TOTAL		8	200

QUESTION WISE ANALYSIS

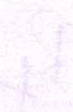
COURSE: STRUCTURAL & IRRIGATION ENGINEERING DRAWING
VERSION: Revision(15) 6011

Qn No	Specific Outcome (as per syllabus)	Module	Content Details	Score
I	1.1.1	I	Draw the cross section at center, support and the longitudinal sections of simply supported rectangular beam, showing the reinforcement and dimensions	25
II	1.1.10	I	Draw the plan and the section showing reinforcement and dimension of an isolated column footing.	25
III	2.1.2	II	Draw the plan and longitudinal section - Stair case-, dog legged and open well showing all the details and dimensions	25
IV	2.1.1	II	Draw the cross section and longitudinal section - Cantilever retaining wall showing all the details and dimensions	25
V	3.1.1 a	III	Draw the elevation and plan of a single and double lacing system for compound column, using welded connection	25
VI	3.1.4	III	Draw the elevation and cross section of a plate girder.	25
VII	4.1.3	IV	Draw the longitudinal section and Plan of a Tank sluice with tower head	25
VIII	4.1.7	IV	Draw the plan and show the different components of a septic tank and dispersion trench	25


RAJALAKSHMI G.R
 PEN:609126
 HEAD OF DEPARTMENT
 DEPARTMENT OF CIVIL ENGINEERING
 CENTRAL POLYTECHNIC COLLEGE
 VATTIYOORKAVU, THIRUVANANTHAPURAM

Sl. No.	Name of the Candidate	Grade	Marks	Percentage
1	[Faint Name]	[Faint Grade]	[Faint Marks]	[Faint Percentage]
2	[Faint Name]	[Faint Grade]	[Faint Marks]	[Faint Percentage]
3	[Faint Name]	[Faint Grade]	[Faint Marks]	[Faint Percentage]
4	[Faint Name]	[Faint Grade]	[Faint Marks]	[Faint Percentage]
5	[Faint Name]	[Faint Grade]	[Faint Marks]	[Faint Percentage]
6	[Faint Name]	[Faint Grade]	[Faint Marks]	[Faint Percentage]
7	[Faint Name]	[Faint Grade]	[Faint Marks]	[Faint Percentage]
8	[Faint Name]	[Faint Grade]	[Faint Marks]	[Faint Percentage]
9	[Faint Name]	[Faint Grade]	[Faint Marks]	[Faint Percentage]
10	[Faint Name]	[Faint Grade]	[Faint Marks]	[Faint Percentage]

1109


RAJALAKSHMI GROUP OF INSTITUTIONS
 HIGHER SECONDARY SCHOOL
 AND COLLEGE
 ATTUR, THIRUVANANTHAPURAM