

SCHEME OF VALUATION

(Scoring Indicators)

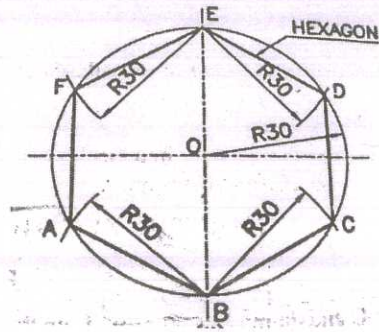
Revision : 2015

Course Code: 2005

Course Title : Engineering Graphics

Qst. No.	Scoring Indicator	Split up score	Sub Total	Total
PART. A				
I. 1.	Continuous thick line, continuous thin line, Continuous thin free hand, Continuous thin zig zag, Dashed thick, Dashed thin, Chain thin, Chain thick, Chain thin double dashed (Any four)	1/2	1/2x4	2
I. 2.	Projection is the representation of the image of an object on a plane surface.			2
I. 3.	To get the true shape of an inclined or oblique surface.			2
I. 4.	The process of unfolding all the surfaces of an object on a plane is called development of surfaces.			2
I. 5.	Auto CAD, Electrical CAD, 3DS-MAX, STAAD, PRO-Engineer, IDEAS, Solidworks. (Any two)	1	1x2	2
PART B				
II.		Figure Dimension Neatness	3 6 1	10
III.		Figure Dimension Neatness	7 2 1	10

IV.



OR any other method

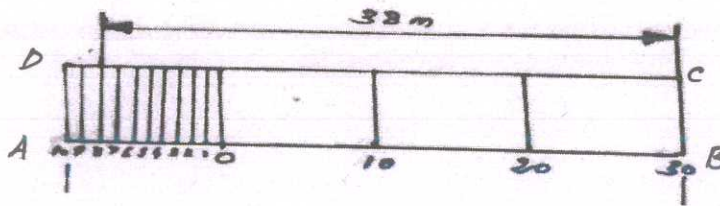
Figure
Dimension
Neatness

8
1
1

10

V.

R.F = 1cm / 5 x 100 cm
= 1/500
Length of scale = RF x Max. length to be measured.
= (1/500) x 40 x 100 = 8 cm



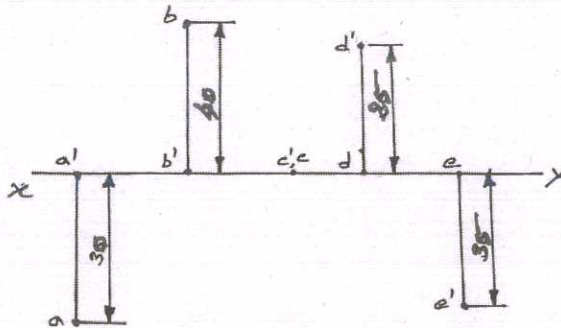
AB = 8 cm

R.F
Length of scale
Marking 38 m

2
2
6

10

VI.



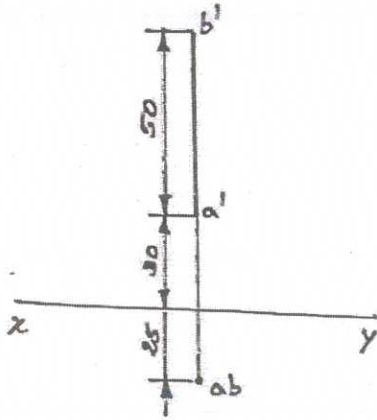
Projection of each point

2

2x5

10

VII.

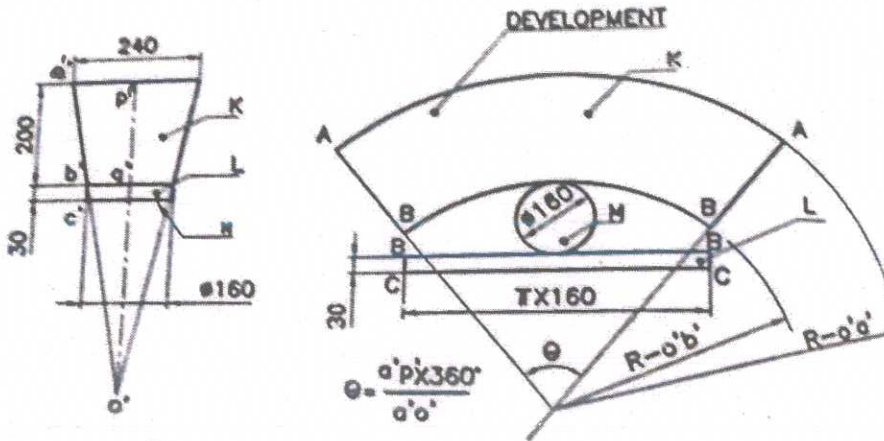


Projection of end point A
Elevation and Plan (a'b' & ab)

2
8

10

VIII.



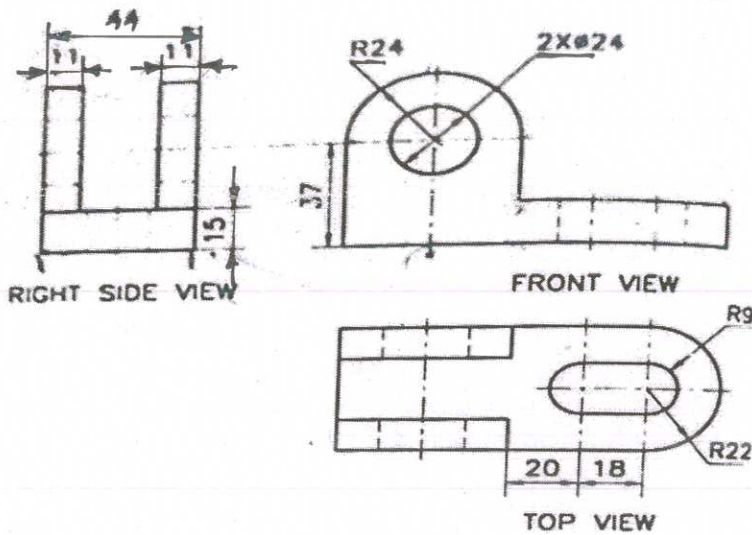
Elevation of bucket
angle
Development

3
2
5

10

PART C

IX.



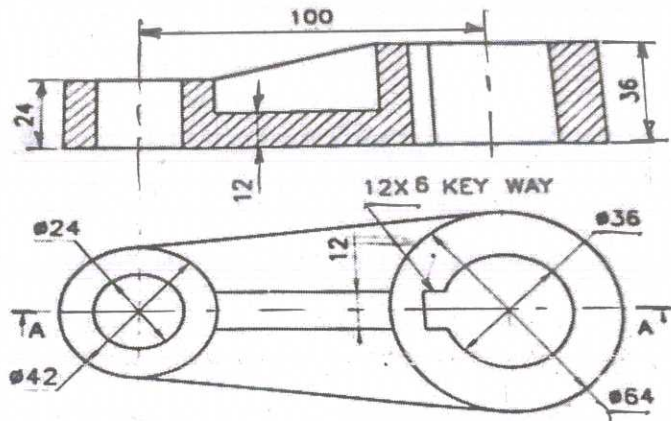
RIGHT SIDE VIEW

FRONT VIEW

TOP VIEW

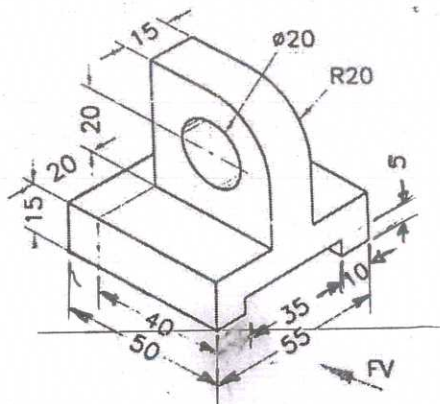
		Elevation	6		
		Plan	6		
		Right side view	5		20
		Dimension	2		
		Neatness	1		

X.



Full Sectional Elevation	10		
Plan	7		
Dimension	2		20
Neatness	1		

XI.



Isometric axes	2		
Isometric view	15		
Dimension	2		20
Neatness	1		